

AI ALERT CAMERA SYSTEM

Advanced artificial intelligence instantly recognises people who may be in danger of coming into contact with moving equipment, preventing accidents before they happen.

AI-ALERT gives audible and visual warnings. It can even slow down or stop the vehicle automatically. This life-saving technology can be fitted to almost any vehicle.

www.davisderby.com

IMPROVED SAFETY & EFFICIENCY

UP TO 4 CAMERAS PROVIDING
360 DEGREE PROTECTION

CONFIGURABLE RED & AMBER ZONES

AUDIBLE AND VISUAL WARNING FOR DRIVER

SLOW DOWN OR STOP UPON ACTIVATION

CAN BE FITTED TO ALL MHE EQUIPMENT

INFO@DAVISDERBY.COM / 01332 227500

HOW IT WORKS



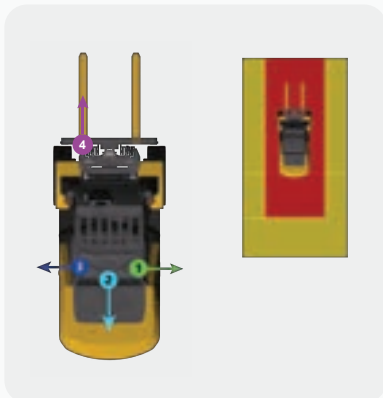
TRUCK SET UP

Up to 4 cameras can be installed on any truck to provide 360 degree coverage of the area it is working in.

An LED display is also installed in the cab of the truck in order to provide more information to the driver. This is to show exactly which zone a pedestrian has entered. Depending on the zone, yellow or red, this will either slow or stop the truck to provide a safe environment.

The zones can be modified to suit the truck and the workspace it is in.

FLEXIBLE PROTECTION AREA



360 Degree Protection

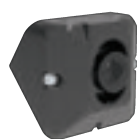
CONFIGURABLE DETECTION ZONES

Configurable yellow & red warning zones allow detection areas to be set to suit your operations and site, minimising unnecessary alerts. Each zone can be individually configured to either alert the driver (audible & visual), slow the vehicle or stop the vehicle.

PERIPHERALS



Camera (SC01)



Camera (SC04)



Speaker



L4 Indicator



Monitor (optional)



SCAN THE QR CODE
HERE TO FIND OUT
MORE



TRUCKLOG
AI-ALERT